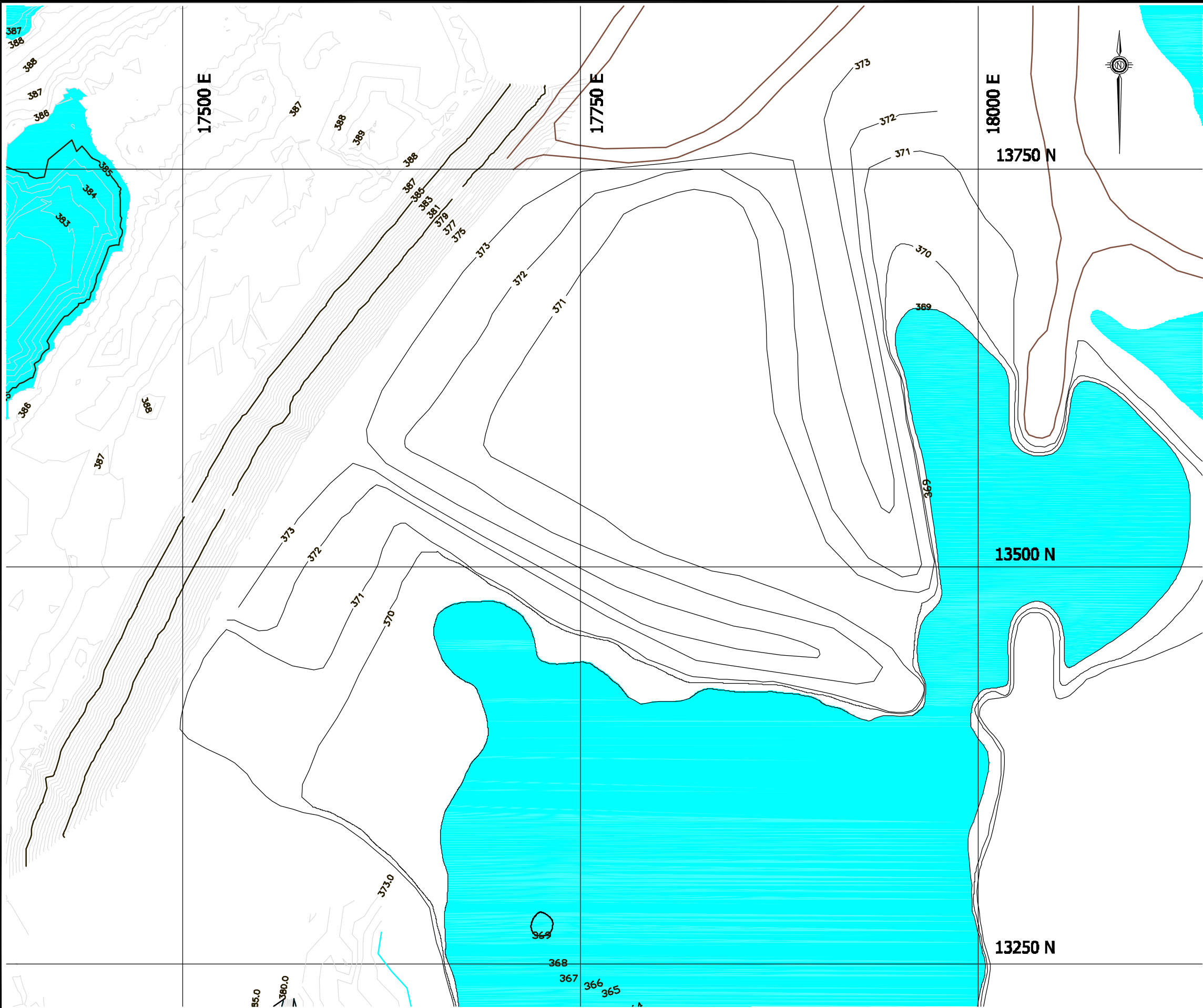


0255-008-09 013 FIGURE_19.dwg



CLIENT: NANISIVIK MINE,
A DIVISION OF CANZINCO LTD.

NOTES:

1. CURRENT BATHYMETRY OF RESERVOIR AND TEST CELL FROM DRAWING New Final Bath V14.dwg SUPPLIED BY NANISIVIK MINE.
2. TOP LAYER OF TEST CELL DIKE TO BE RELOCATED WITHIN THE TEST CELL DURING RECLAMATION ACTIVITIES.
3. RESERVOIR LEVEL TO BE LOWERED TO APPROXIMATELY 369 m IN POST CLOSURE.

50m 0 50m 100m 150m

AS A MUTUAL PROTECTION TO OUR CLIENT, THE PUBLIC AND OURSELVES, ALL REPORTS AND DRAWINGS ARE SUBMITTED FOR THE CONFIDENTIAL INFORMATION OF OUR CLIENT FOR A SPECIFIC PROJECT AND AUTHORIZATION FOR USE AND/OR PUBLICATION OF DATA, STATEMENTS, CONCLUSIONS OR ABSTRACTS FROM OR REGARDING OUR REPORTS AND DRAWINGS IS RESERVED PENDING OUR WRITTEN APPROVAL.

REV.	DATE	REVISION NOTES	DRAWN	CHECKED	APPROVED

SCALE:	AS SHOWN	
DATE:	FEB 2004	
DRAWN:	CJT	
DESIGNED:	GKC	
CHECKED:	JWC	
APPROVED:	JWC	

PROJECT	WEST TWIN DISPOSAL AREA CLOSURE PLAN	
TITLE	TEST CELL TAILINGS GRADING PLAN	
PROJECT No.	DWG No.	REV.
0255-008-09	19	0

BGC **BGC ENGINEERING INC.**
AN APPLIED EARTH SCIENCES COMPANY

Calgary, AB Phone: (403) 250 5185